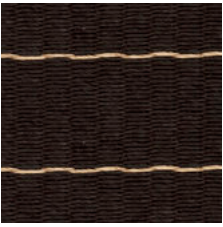


# WOODNOTES 2023

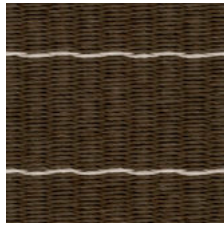
# WOVEN PAPER YARN CARPETS



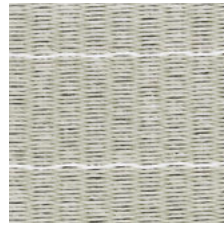
12495 LINE  
BLACK - NATURAL



124199 LINE  
ANTIQUÉ - BLACK



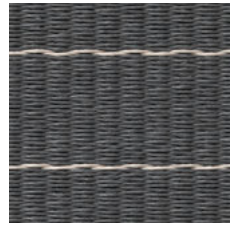
1242015 LINE  
ONYX - STONE



124151 LINE  
STONE - WHITE



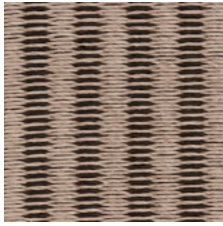
124159 LINE  
STONE - BLACK



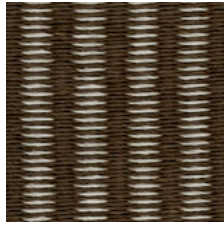
1244015 LINE  
GRAPHITE - STONE



11695 RAILWAY  
BLACK - NATURAL



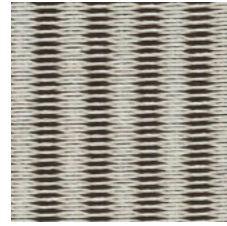
116199 RAILWAY  
ANTIQUÉ - BLACK



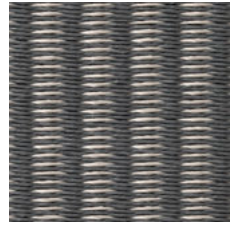
1162015 RAILWAY  
ONYX - STONE



116151 RAILWAY  
STONE - WHITE



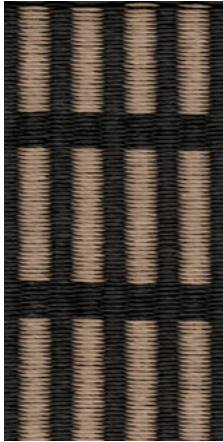
116159 RAILWAY  
STONE - BLACK



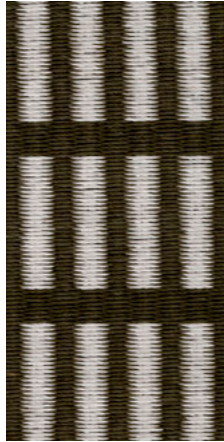
1164015 RAILWAY  
GRAPHITE - STONE



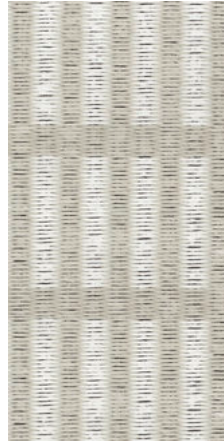
11895 NEW YORK  
BLACK - NATURAL



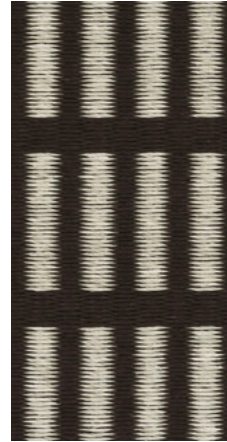
118919 NEW YORK  
BLACK - ANTIQUÉ



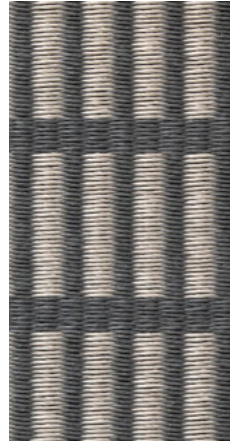
1182015 NEW YORK  
ONYX - STONE



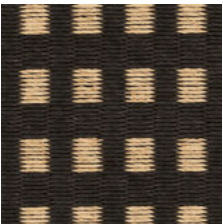
118151 NEW YORK  
STONE - WHITE



118915 NEW YORK  
BLACK - STONE



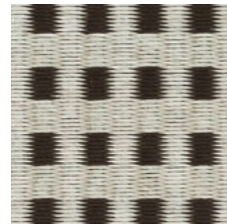
1184015 NEW YORK  
GRAPHITE - STONE



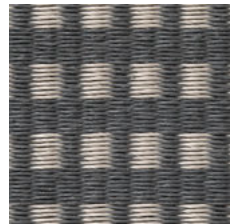
11795 CITY  
BLACK - NATURAL



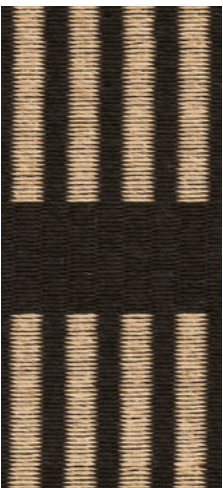
117151 CITY  
STONE - WHITE



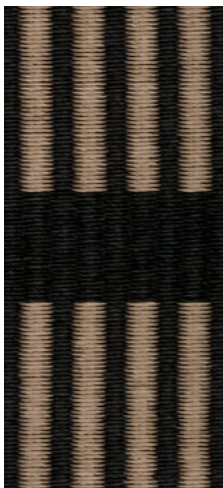
117159 CITY  
STONE - BLACK



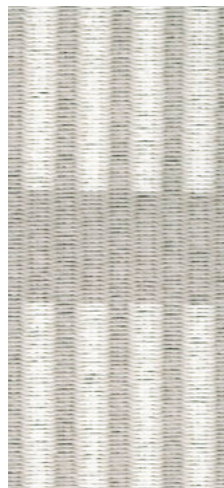
1174015 CITY  
GRAPHITE - STONE



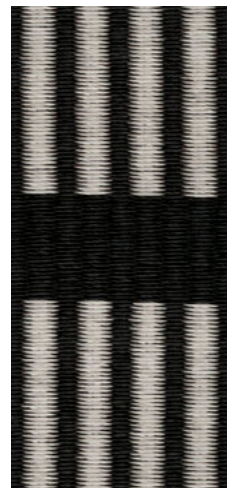
11595 CUT STRIPE  
BLACK - NATURAL



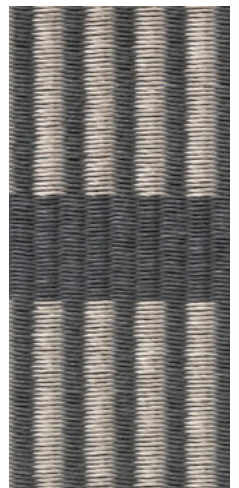
115919 CUT STRIPE  
BLACK - ANTIQUÉ



115151 CUT STRIPE  
STONE - WHITE



115915 CUT STRIPE  
BLACK - STONE



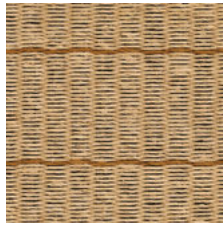
1154015 CUT STRIPE  
GRAPHITE - STONE



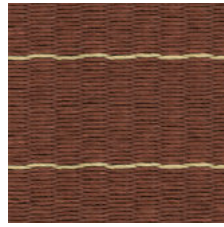
12459 LINE  
NATURAL – BLACK



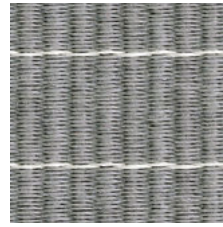
12451 LINE  
NATURAL – WHITE



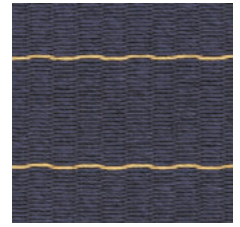
12453 LINE  
NATURAL – BROWN



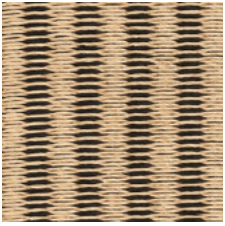
12405 LINE  
REDDISH BROWN – NATURAL



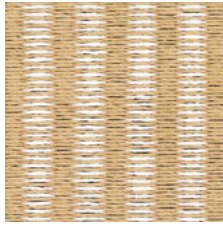
124215 LINE  
GREY – STONE



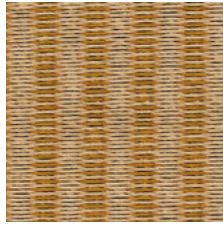
12445 LINE  
DARK BLUE – NATURAL



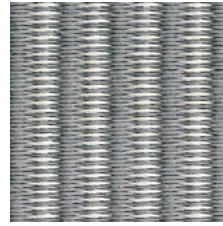
11659 RAILWAY  
NATURAL – BLACK



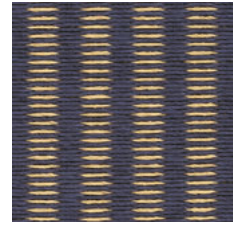
11651 RAILWAY  
NATURAL – WHITE



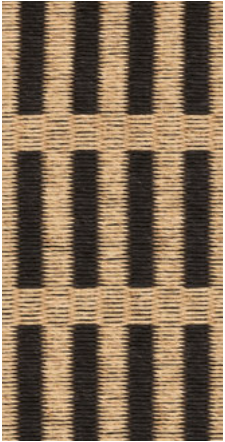
11653 RAILWAY  
NATURAL – BROWN



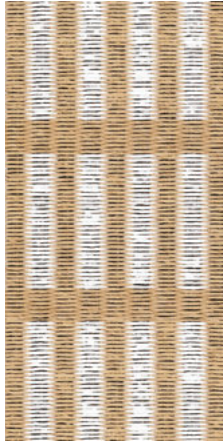
116215 RAILWAY  
GREY – STONE



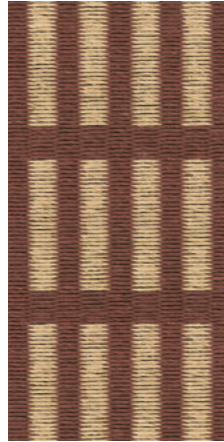
11645 RAILWAY  
DARK BLUE – NATURAL



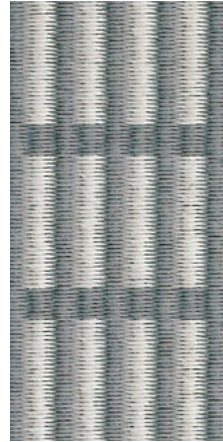
11859 NEW YORK  
NATURAL – BLACK



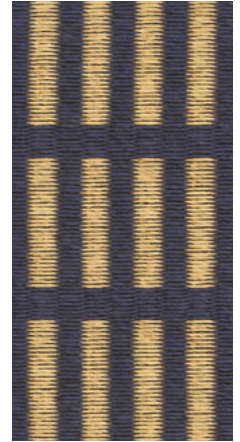
11851 NEW YORK  
NATURAL – WHITE



11805 NEW YORK  
REDDISH BROWN – NATURAL



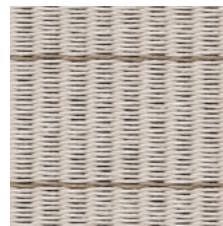
118215 NEW YORK  
GREY – STONE



11845 NEW YORK  
DARK BLUE – NATURAL



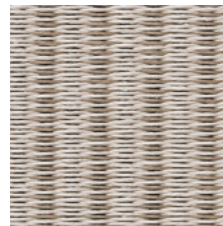
11759 CITY  
NATURAL – BLACK



1241532 LINE  
STONE – NUTRIA



1243240 LINE  
NUTRIA – GRAPHITE



1161532 RAILWAY  
STONE – NUTRIA



1163240 RAILWAY  
NUTRIA – GRAPHITE

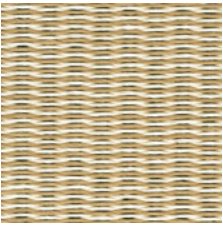
## FINISHING OPTIONS

- Sewn edges and turned ends (O)
- Sewn edges and fringes (H)
- Sewn edges, turned ends and backing (S)
- Sewn edges, backing and fringes (F)
- Narrow edging and backing (P)
- Wide edging and backing (T)
- Wide edging (K)

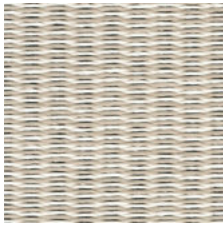
## COLOUR OPTIONS

The carpets can also be personalized. Colours can be matched to suit individual preferences.

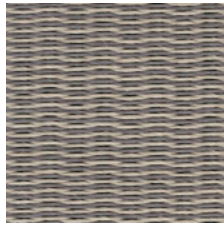
# WOVEN PAPER YARN CARPETS



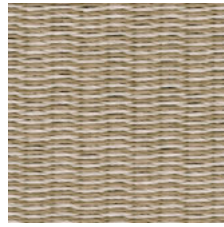
13251 COAST  
NATURAL - WHITE



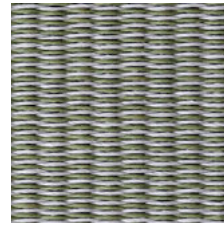
132151 COAST  
STONE - WHITE



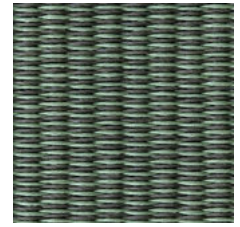
132215 COAST  
GREY - STONE



1321519 COAST  
STONE - ANTIQUE



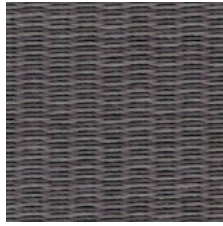
1322730 COAST  
ASPEN GREEN - LIGHT GREY



1322720 COAST  
ASPEN GREEN - ONYX



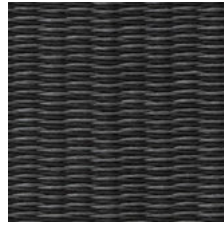
1324030 COAST  
GRAPHITE - LIGHT GREY



132132 COAST  
DARK VIOLET - GREY



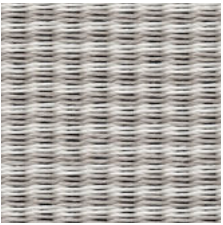
132920 COAST  
BLACK - ONYX



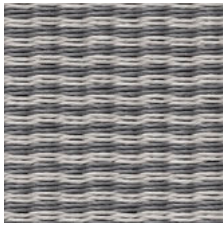
1324009 COAST  
GRAPHITE - BLACK



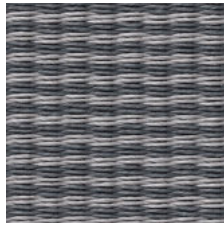
1323240 COAST  
NUTRIA - GRAPHITE



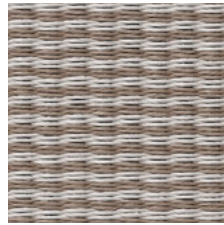
1441501 ROAD  
STONE - WHITE



1440215 ROAD  
GREY - STONE



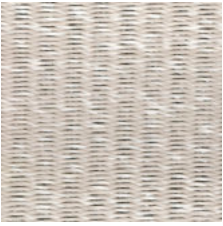
1444030 ROAD  
GRAPHITE - LIGHT GREY



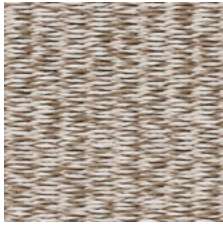
1441915 ROAD  
ANTIQUE - STONE



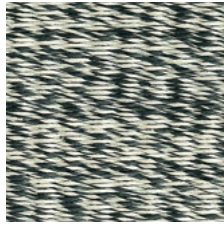
1440932 ROAD  
BLACK - NUTRIA



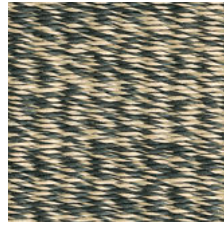
130151 LIVING  
STONE - WHITE



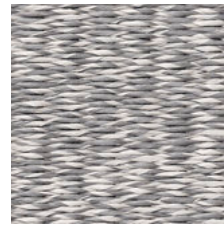
1301532 LIVING  
STONE - NUTRIA



130159 LIVING  
STONE - BLACK



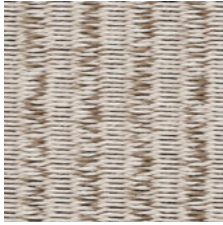
13095 LIVING  
BLACK - NATURAL



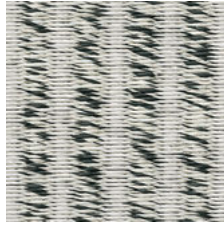
1300215 LIVING  
GREY - STONE



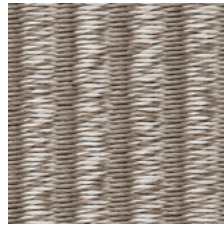
131115 FIELD  
WHITE - STONE



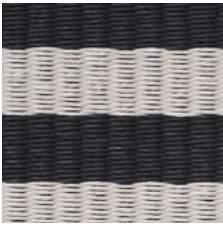
1311532 FIELD  
STONE - NUTRIA



131159 FIELD  
STONE - BLACK



1313215 FIELD  
NUTRIA - STONE



1190915 STRIPE  
BLACK – STONE



1394015 MIDSUMMER  
GRAPHITE – STONE



1394009 MIDSUMMER  
GRAPHITE – BLACK



125151 SUMMER RAIN  
STONE – WHITE



1421501 BIG STRIPE  
STONE – WHITE



1420915 BIG STRIPE  
BLACK – STONE



1420905 BIG STRIPE  
BLACK – NATURAL

## FINISHING OPTIONS

- Sewn edges and turned ends (O)
- Sewn edges and fringes (H)
- Sewn edges, turned ends and backing (S)
- Sewn edges, backing and fringes (F)
- Narrow edging and backing (P)
- Wide edging and backing (T)
- Wide edging (K)

## COLOUR OPTIONS

The carpets can also be personalized. Colours can be matched to suit individual preferences.

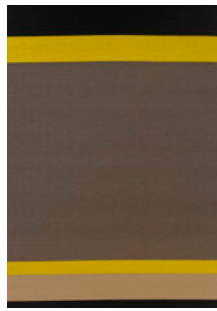
# WOVEN PAPER YARN CARPETS



1331501 PANORAMA  
STONE - WHITE



1330930 PANORAMA  
BLACK - LIGHT GREY



1330905 PANORAMA  
BLACK - NATURAL



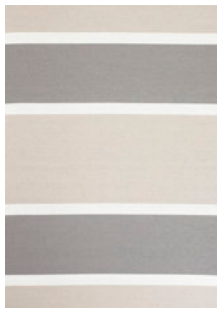
1330919 PANORAMA  
BLACK - ANTIQUE



1334030 PANORAMA  
GRAPHITE - LIGHT GREY



1360215 BRIDGE  
GREY - STONE



1361530 BRIDGE  
STONE - LIGHT GREY



1363034 BRIDGE  
LIGHT GREY - BRASS



1363205 BRIDGE  
NUTRIA - NATURAL



1364030 BRIDGE  
GRAPHITE - LIGHT GREY



1403001 FOURWAYS  
LIGHT GREY - WHITE



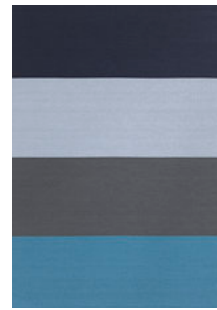
1404015 FOURWAYS  
GRAPHITE - STONE



1403432 FOURWAYS  
BRASS - NUTRIA



1404140 FOURWAYS  
TURQUOISE - GRAPHITE



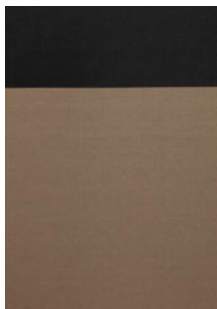
1404104 FOURWAYS  
TURQUOISE - DARK BLUE



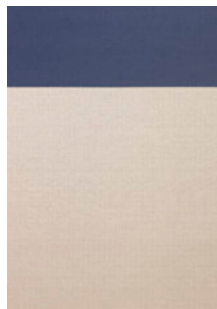
1402009 FOURWAYS  
ONYX - BLACK



1381501 BEACH  
STONE - WHITE



1383209 BEACH  
NUTRIA - BLACK



1381544 BEACH  
STONE - INTENSIVE BLUE



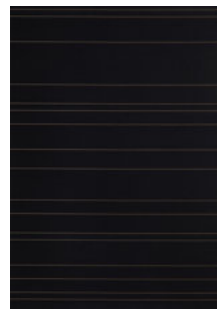
1261545 WILLOW  
STONE - WILLOW



1260545 WILLOW  
NATURAL - WILLOW



1264505 WILLOW  
WILLOW - NATURAL



1260905 WILLOW  
BLACK - NATURAL

## FINISHING OPTIONS

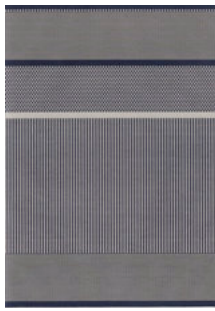
- Sewn edges and turned ends (O)
- Sewn edges and fringes (H)
- Sewn edges, turned ends and backing (S)
- Sewn edges, backing and fringes (F)
- Narrow edging and backing (P)
- Wide edging and backing (T)
- Wide edging (K)

## COLOUR OPTIONS

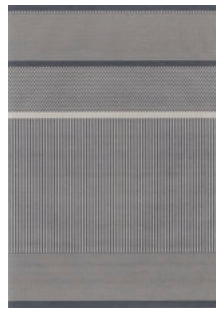
The carpets can also be personalized. Colours can be matched to suit individual preferences.



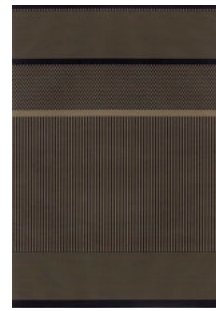
1430115 SAN FRANCISCO  
WHITE - STONE



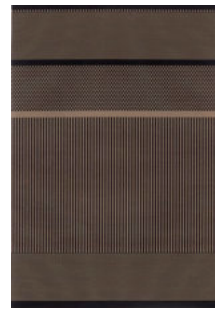
1430415 SAN FRANCISCO  
DARK BLUE - STONE



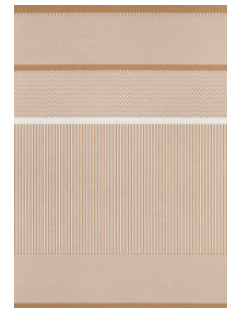
1430215 SAN FRANCISCO  
GREY - STONE



1430932 SAN FRANCISCO  
BLACK - NUTRIA



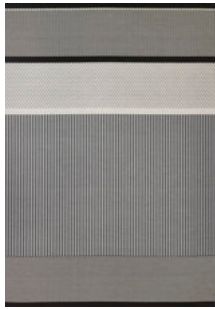
1430905 SAN FRANCISCO  
BLACK - NATURAL



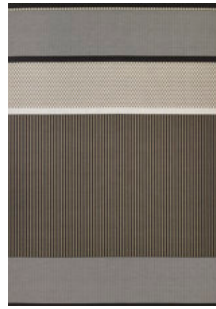
1430501 SAN FRANCISCO  
NATURAL - WHITE



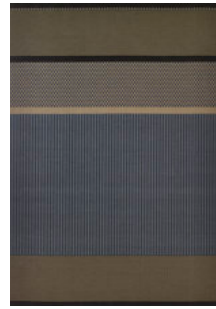
1431501 SAN FRANCISCO  
STONE - WHITE



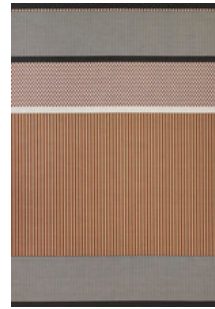
1433015 SAN FRANCISCO  
LIGHT GREY - STONE



1433215 SAN FRANCISCO  
NUTRIA - STONE



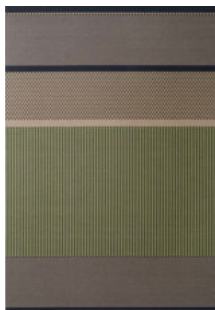
1430432 SAN FRANCISCO  
DARK BLUE - NUTRIA



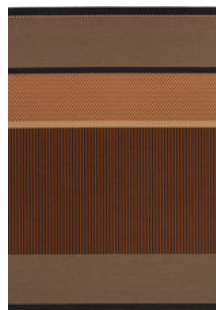
1430015 SAN FRANCISCO  
REDDISH BROWN - STONE



1432715 SAN FRANCISCO  
ASPEN GREEN - STONE



1432732 SAN FRANCISCO  
ASPEN GREEN - NUTRIA



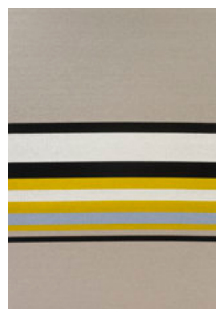
1430305 SAN FRANCISCO  
BROWN - NATURAL



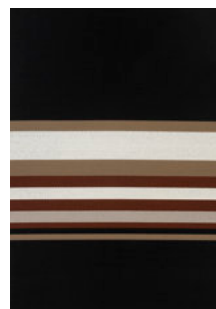
1350115 HORIZON  
WHITE - STONE



1350205 HORIZON  
GREY - NATURAL



1351522 HORIZON  
STONE - YELLOW



1350900 HORIZON  
BLACK - REDDISH BROWN



1370230 AVENUE  
GREY - LIGHT GREY



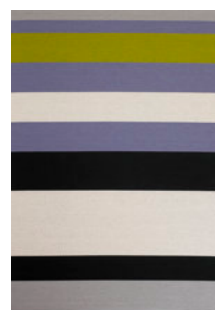
1371522 AVENUE  
STONE - YELLOW



1373230 AVENUE  
NUTRIA - LIGHT GREY



1373040 AVENUE  
LIGHT GREY - GRAPHITE

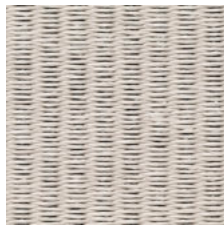


1373033 AVENUE  
LIGHT GREY - GREY PURPLE

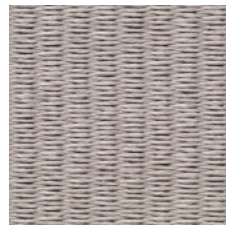
# WOVEN PAPER YARN CARPETS PLAY COLOUR CHART



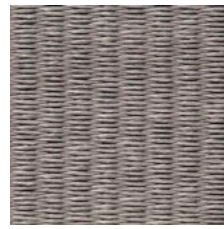
01  
WHITE



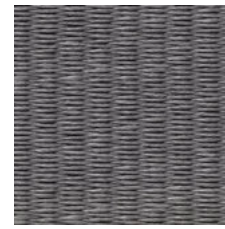
15  
STONE



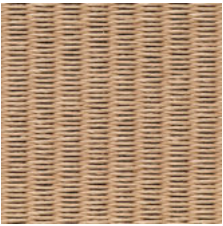
30  
LIGHT GREY



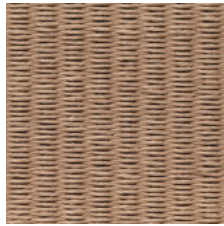
02  
GREY



40  
GRAPHITE



05  
NATURAL



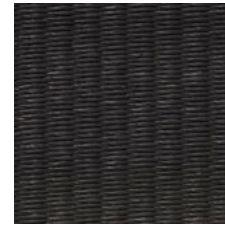
19  
ANTIQUE



32  
NUTRIA



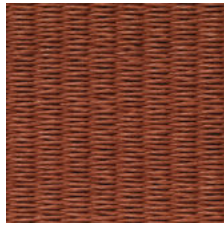
20  
ONYX



09  
BLACK



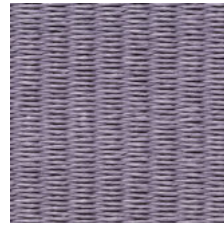
03  
BROWN



00  
REDDISH BROWN



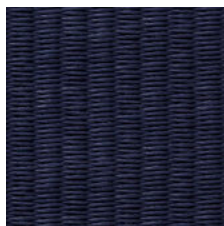
13  
DARKVIOLET



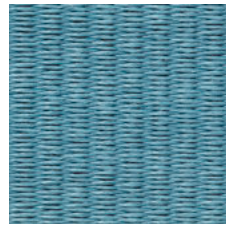
33  
GREY PURPLE



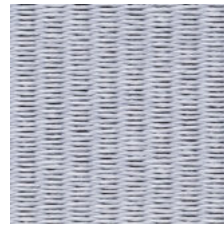
04  
DARK BLUE



44  
INTENSIVE BLUE



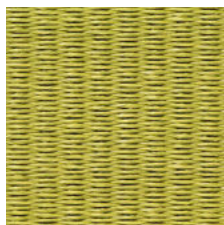
41  
TURQUOISE



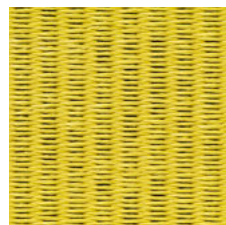
43  
LIGHT BLUE



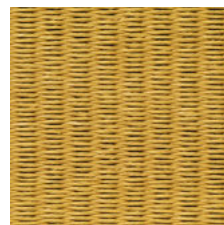
27  
ASPEN GREEN



08  
GREEN



22  
YELLOW



34  
BRASS

## FINISHING OPTIONS

- Sewn edges and turned ends (O)
- Sewn edges and fringes (H)
- Sewn edges, turned ends and backing (S)
- Sewn edges, backing and fringes (F)
- Narrow edging and backing (P)
- Wide edging and backing (T)
- Wide edging (K)

## COLOUR OPTIONS

The carpets can also be personalized. Colours can be matched to suit individual preferences.



## CARPET EDGING

### PAPER YARN COTTON

There are 9 colour options available in paper yarn cotton edging. The material composition is 67 % paper yarn (weft) and 33 % cotton (warp). The border measures 12 cm in total of which 6 cm is in sight. Paper yarn edging has been designed for carpets with reversible use as well as for carpets with backing.

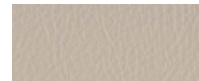
### COTTON

There are 12 colour options available in cotton edging. The edging border measures 1 cm in sight. Cotton edging is used for carpets with backing.

### LEATHER

There are two colour options available in leather edging. The edging border measures 1,5 cm in sight. Leather edging is used for carpets with backing.

### LEATHER



1921515 STONE

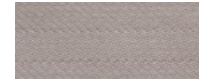


19299 BLACK

### COTTON



1911515 STONE



1913030 LIGHT GREY



1911919 ANTIQUE



19155 NATURAL



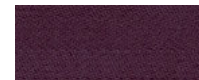
1913232 NUTRIA



19122 GREY



19100 REDDISH BROWN



1911313 DARK VIOLET



19144 DARK BLUE



1912020 ONYX



1914040 GRAPHITE



19199 BLACK

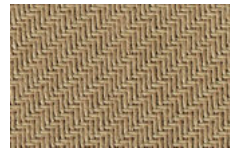
### PAPER YARN COTTON



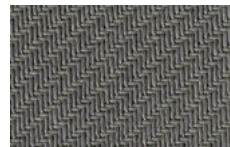
1901515 STONE



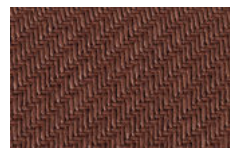
1901919 ANTIQUE



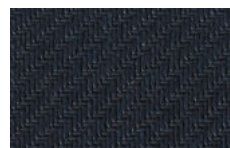
19055 NATURAL



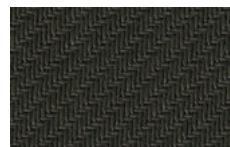
19022 GREY



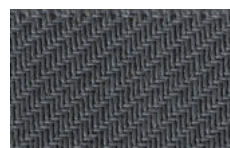
19000 REDDISH BROWN



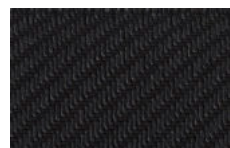
19044 DARK BLUE



1902020 ONYX



1904040 GRAPHITE



19099 BLACK

## WOVEN PAPER YARN CARPETS

### SEWN EDGES (O)



Finishing: type O, sewn edges and turned ends  
Designs: All paper yarn carpets (see pages 2–9)  
Material: 86 % paper yarn (weft), 14 % cotton (warp)  
Weight: approx. 1,90 kg/m<sup>2</sup>  
Thickness: 6 mm

Suggested application: residential and light contract

Carpets are supplied to order. The maximum width is 250 cm and the maximum length 500 cm. Production tolerance  $\pm 2\%$ . Carpets are supplied with soil-repellent treatment. The use of non-skid underlay is recommended. Design Ritva Puotila.

### SEWN EDGES AND FRINGES (H)



Finishing: type H, sewn edges and fringes, length of fringes 9 cm  
Designs: All paper yarn carpets (see pages 2–9)  
Material: 86 % paper yarn (weft), 14 % cotton (warp)  
Weight: approx. 1,90 kg/m<sup>2</sup>  
Thickness: 6 mm

Suggested application: residential and light contract

Carpets are designed for reversible use and supplied to order. The maximum width is 250 cm and the maximum length 500 cm. Production tolerance  $\pm 2\%$ . Carpets are supplied with soil-repellent treatment. The use of non-skid underlay is recommended. Design Ritva Puotila.

### SEWN EDGES AND BACKING (S)



Finishing: type S, sewn edges, turned ends and backing  
Designs: All paper yarn carpets (see pages 2–9)  
Material: 76 % paper yarn (weft), 13 % cotton (warp), 11 % polyester felt (backing)  
Backing: 90% recycled polyester; 10% special low-melt polyester  
Weight: approx. 2,20 kg/m<sup>2</sup> (incl. backing)  
Thickness: 6 mm with felt backing

Suggested application: residential and contract

Carpets are supplied to order. The maximum width is 335 cm and the maximum length 1000 cm. Production tolerance  $\pm 2\%$ . Carpets are supplied with soil-repellent treatment. Design Ritva Puotila.

### SEWN EDGES, BACKING AND FRINGES (F)

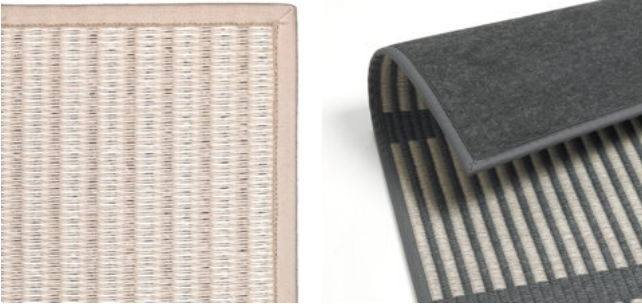


Finishing: type F, sewn edges, backing and fringes, length of fringes 9 cm  
Designs: All paper yarn carpets (see pages 2–9)  
Material: 76 % paper yarn (weft), 13 % cotton (warp), 11 % polyester felt (backing)  
Backing: 90% recycled polyester; 10% special low-melt polyester  
Weight: approx. 2,20 kg/m<sup>2</sup> (incl. backing)  
Thickness: 6 mm with felt backing

Suggested application: residential and contract

Carpets are supplied to order. The maximum width is 335 cm and the maximum length 1000 cm. Production tolerance  $\pm 2\%$ . Carpets are supplied with soil-repellent treatment. Design Ritva Puotila.

## NARROW EDGING AND BACKING (P)



Finishing: type P, bound around the edges with 1 cm wide cotton border

Designs: All paper yarn carpets (see pages 2–9)

Material: 76 % paper yarn (weft), 13 % cotton (warp), 11 % polyester felt (backing)

Backing: 90% recycled polyester; 10% special low-melt polyester

Weight: approx. 2,20 kg/m<sup>2</sup> (incl. backing)

Thickness: 6 mm with felt backing

Suggested application: residential and contract

Carpets are supplied to order. The maximum width is 335 cm, the maximum length is 1000 cm. Production tolerance ±2%. Carpets are supplied with soil-repellent treatment. Round carpets are also available in this quality.

## WIDE EDGING AND BACKING (T)



Finishing: type T, bound around the edges with 6 cm wide paper yarn cotton border

Designs: All paper yarn carpets (see pages 2–9)

Material: 76 % paper yarn (weft), 13 % cotton (warp), 11 % polyester felt (backing)

Backing: 90% recycled polyester; 10% special low-melt polyester

Weight: approx. 2,20 kg/m<sup>2</sup> (incl. backing)

Thickness: 6 mm with felt backing

Suggested application: residential and contract

Carpets are supplied to order. The maximum width is 335 cm and the maximum length 1000 cm. Production tolerance ±2%. Carpets are supplied with soil-repellent treatment. Design Ritva Puotila.

## WIDE EDGING (K)



Finishing: type K, bound around the edges with 6 cm wide paper yarn cotton border

Designs: All paper yarn carpets (see pages 2–9)

Material: 86 % paper yarn (weft), 14 % cotton (warp)

Weight: approx. 1,95 kg/m<sup>2</sup>

Thickness: 6 mm

Suggested application: residential and light contract

Carpets with paper yarn cotton edging are designed for reversible use and supplied to order. The maximum width is 335 cm and the maximum length 1000 cm. Production tolerance ±2%. Carpets are supplied with soil-repellent treatment on both sides. The use of non-skid underlay is recommended. Design Ritva Puotila.

## NON SKID-UNDERLAY



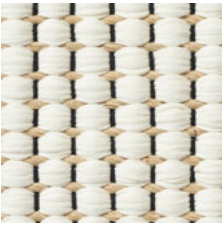
Material: 25 % polyolefin with 75% natural latex

Suggested application: recommended for carpets without backing

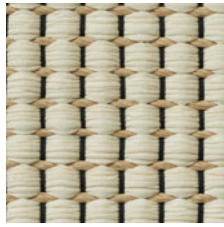
Our non-skid underlay increases comfort and extends the life expectancy of your carpet. It's suited for all types of floors: wood, laminate, ceramic, marble, cork, etc. and it's exceptionally well suited for floors with underfloor heating. The non-skid underlay is delivered according to the size of the rug (maximum width 290 cm). The underlay is light-weight and easy to cut into the desired shapes and sizes.

The strength and durability of paper yarn derive directly from wood fibre. The compactness of the wood fibres means that paper yarn does not gather dust or dirt, an important feature particularly for those allergic to dust. Woodnotes paper yarn carpets tolerate well humid conditions. Due to the tight weave and choice of material, the carpets do not ignite easily, only the surface becomes charred.

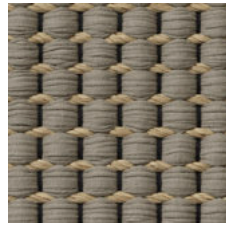
# WOVEN COTTON PAPER YARN CARPETS



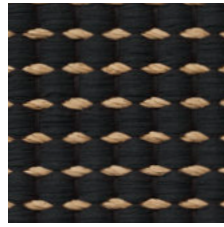
17101001 DUETTO 1  
NATURAL - WHITE



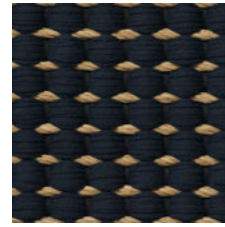
17101034 DUETTO 1  
NATURAL - CREAM



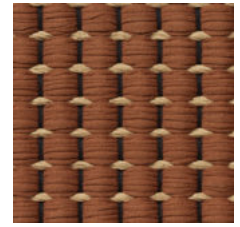
17101012 DUETTO 1  
NATURAL - NUTRIA



17101002 DUETTO 1  
NATURAL - BLACK



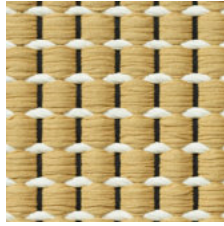
17101024 DUETTO 1  
NATURAL - BLUEBERRY



17101004 DUETTO 1  
NATURAL - TERRA



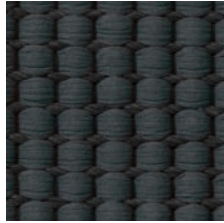
17107034 DUETTO 2  
WHITE - CREAM



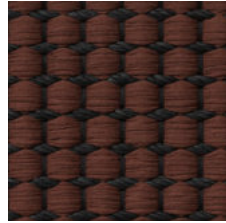
17107006 DUETTO 2  
WHITE - YELLOW



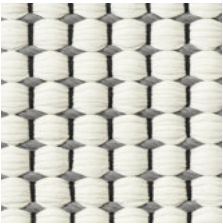
17109002 DUETTO 3  
BLACK - BLACK



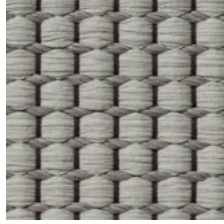
17109007 DUETTO 3  
BLACK - GREY



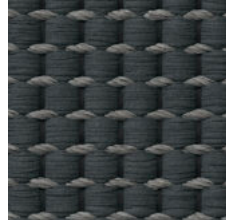
17109010 DUETTO 3  
BLACK - REDDISH BROWN



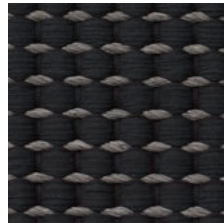
17111001 DUETTO 4  
GREY - WHITE



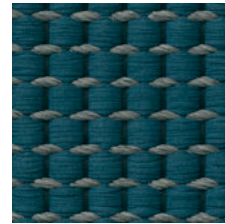
17111035 DUETTO 4  
GREY - STONE



17111007 DUETTO 4  
GREY - GREY



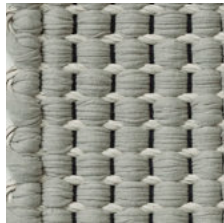
17111002 DUETTO 4  
GREY - BLACK



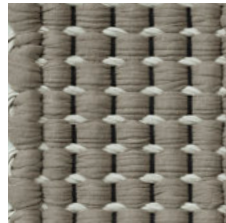
17111036 DUETTO 4  
GREY - TURQUOISE



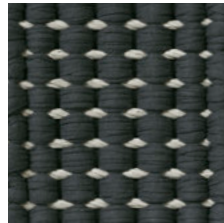
17113001 DUETTO 5  
STONE - WHITE



17113035 DUETTO 5  
STONE - STONE



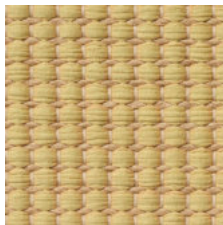
17113012 DUETTO 5  
STONE - NUTRIA



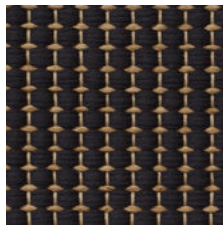
17113007 DUETTO 5  
STONE - GREY



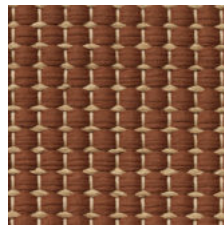
17115001 PICCOLO 1  
NATURAL - WHITE



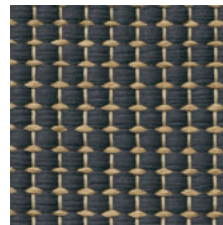
17115006 PICCOLO 1  
NATURAL - YELLOW



17115 002 PICCOLO 1  
NATURAL - BLACK



17115004 PICCOLO 1  
NATURAL - TERRA



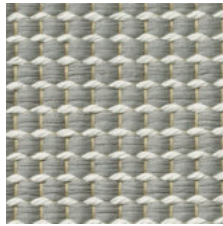
17115007 PICCOLO 1  
NATURAL - GREY



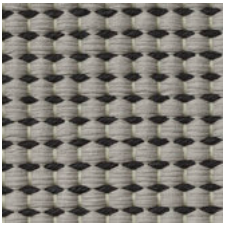
17116001 PICCOLO 2  
WHITE - WHITE



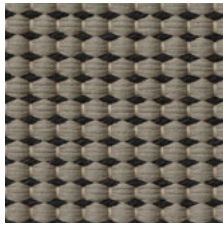
17116034 PICCOLO 2  
WHITE - CREAM



17116035 PICCOLO 2  
WHITE - STONE



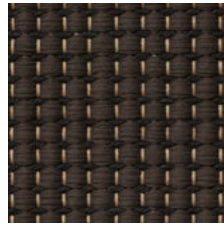
17117035 PICCOLO 3  
BLACK - STONE



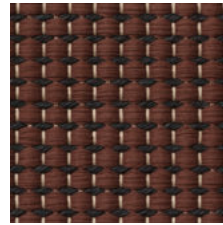
17117012 PICCOLO 3  
BLACK - NUTRIA



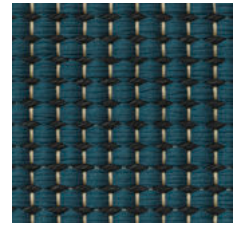
17117002 PICCOLO 3  
BLACK - BLACK



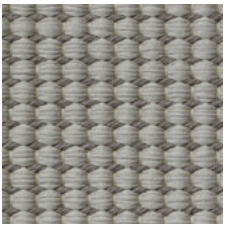
17117011 PICCOLO 3  
BLACK - BROWN



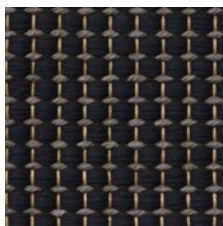
17117010 PICCOLO 3  
BLACK - REDDISH BROWN



17117036 PICCOLO 3  
BLACK - TURQUOISE



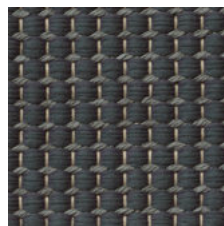
17118035 PICCOLO 4  
GREY - STONE



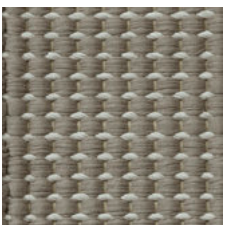
17118002 PICCOLO 4  
GREY - BLACK



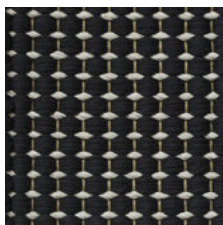
17118024 PICCOLO 4  
GREY - BLUEBERRY



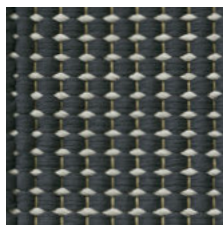
17118007 PICCOLO 4  
GREY - GREY



17121012 PICCOLO 5  
STONE - NUTRIA



17121002 PICCOLO 5  
STONE - BLACK



17121007 PICCOLO 5  
STONE - GREY

## FINISHING OPTIONS

Turned ends.

The number after the name indicates the colour of the paper yarn.

Duetto/Piccolo 1: Natural

Duetto/Piccolo 2: White

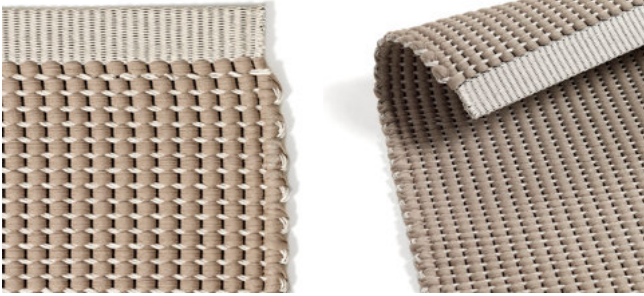
Duetto/Piccolo 3: Black

Duetto/Piccolo 4: Grey

Duetto/Piccolo 5: Stone

## WOVEN COTTON PAPER YARN CARPETS

### DUETTO



Finishing: woven turned paper yarn ends, 5 cm wide  
Design: Duetto (see page 12)  
Production method: hand woven  
Materials: 74% organic cotton, 26% paper yarn  
Weight: 3,4 kg/m<sup>2</sup>  
Thickness: 12-15 mm  
Suggested applications: residential and light contract

Carpets are designed for reversible use and they are supplied to order. The width is 70 to 340 cm, the maximum length is 1000 cm, size tolerance  $\pm 3$  %. Materials are supplied with soil-repellent treatment. Thanks to the smooth surface and dust repellent materials, an excellent rug for allergic homes. The use of non-skid underlay is recommended. Design Hanna Korvela.

### PICCOLO



Finishing: woven turned paper yarn ends, 3 cm wide  
Design: Piccolo (see page 13)  
Production method: hand woven  
Materials: 68 % organic cotton, 32 % paper yarn  
Weight: 2,5 kg/m<sup>2</sup>  
Thickness: 9 -12 mm  
Suggested applications: residential and light contract

Carpets are designed for reversible use, and they are supplied to order. The width is 70 to 340 cm, the maximum length is 1000 cm, size tolerance  $\pm 3$  %. Materials are supplied with soil-repellent treatment. Thanks to the smooth surface and dust repellent materials, an excellent rug for allergic homes. The use of non-skid underlay is recommended. Design Hanna Korvela.

## WOVEN WOOL PAPER YARN CARPETS

### MINORE



Finishing: woven turned wool-paper yarn ends, 4 cm wide  
Design: Minore  
Production method: hand woven  
Materials: 64 % wool, 27 % paper yarn, 9 % cotton (warp)  
Weight: approx. 2,2 kg/m<sup>2</sup>  
Thickness: 10 mm  
Suggested applications: residential and light contract

Minore carpets are designed for reversible use, and they are supplied to order. The width is 70 to 250 cm, the maximum length 1000 cm, size tolerance  $\pm 3$  %. The colours are natural sheep wool colours that have not been chemically dyed. Thanks to the smooth surface and dust repellent materials, an excellent rug for allergic homes. The use of non-skid underlay is recommended. Design Hanna Korvela.



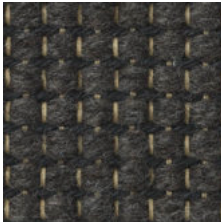
17151001 MINORE 1  
NATURAL – STONE



17151030 MINORE 1  
NATURAL – NATURAL BEIGE



17153030 MINORE 3  
BLACK – NATURAL BEIGE



17153040 MINORE 3  
BLACK – GREYISH BROWN



17154040 MINORE 4  
GREY – GREYISH BROWN



17155001 MINORE 5  
STONE – WHITE



17155030 MINORE 5  
STONE – NATURAL BEIGE

## FINISHING OPTIONS

Turned ends.

The number after the name indicates the colour of the paper yarn.

Minore 1: Natural

Minore 3: Black

Minore 4: Grey

Minore 5: Stone

## WOVEN IN/OUT CARPETS

### SEWN EDGES AND ENDS WITH EDGING (U)



Finishing: type U, sewn edges and ends with narrow edging (2,5 cm)  
Designs: all In/Outdoor carpets.  
Material: 100% polypropylene  
Weight: approx. 1,5 kg/m<sup>2</sup>  
Thickness: 4 mm

Suggested application: residential and light contract outdoor and indoor

Carpets are supplied to order. The maximum width is 300 cm and the maximum length 1000 cm. Production tolerance  $\pm 2\%$ . Carpets with sewn edges and ends with narrow edging are designed for reversible use. The use of non-skid underlay is recommended for carpets without backing. Slight weaving curve might occur in carpets without backing. Design Woodnotes design team.

### SEWN EDGES AND FRINGES (H)



Finishing: type H, sewn edges and fringes (length 9 cm)  
Designs: all In/Outdoor carpets.  
Material: 100% polypropylene  
Weight: approx. 1,5 kg/m<sup>2</sup>  
Thickness: 4 mm

Suggested application: residential and light contract outdoor and indoor

Carpets are supplied to order. The maximum width is 300 cm and the maximum length 1000 cm. Production tolerance  $\pm 2\%$ . Carpets with sewn edges and fringes are designed for reversible use. The use of non-skid underlay is recommended for carpets without backing. Slight weaving curve might occur in carpets without backing. Design Woodnotes design team.

### SEWN EDGES, BACKING AND ENDS WITH EDGING (S)



Finishing: type S, sewn edges, backing and ends with narrow edging (2,5 cm)  
Designs: all In/Outdoor carpets.  
Material: 84% polypropylene, 16% polyester (backing)  
Material (backing): 90% recycled polyester, 10% special low-melt polyester  
Weight: approx. 1,75 kg/m<sup>2</sup>  
Thickness: 6 mm

Suggested application: residential and light contract indoor

Carpets are supplied to order. The maximum width is 300 cm and the maximum length 1000 cm. Production tolerance  $\pm 2\%$ . Design Woodnotes design team.

## FINISHING OPTIONS

Sewn edges and ends with narrow edging (U)

Sewn edges and fringes (H)

Sewn edges, backing and ends with edging (S)

Please note that the colours are reversed on the other side of the Beach and Big Stripe carpets.





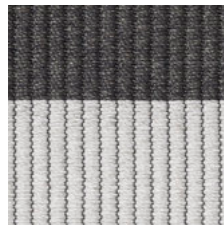
15380204 BEACH  
MELANGE GREY – NAVY BLUE



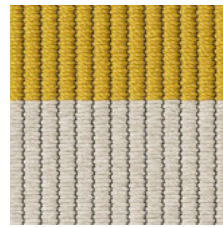
15380502 BEACH  
LIGHT SAND – MELANGE GREY



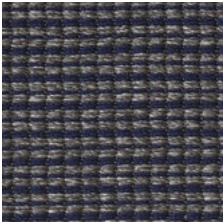
15380405 BEACH  
NAVY BLUE – LIGHT SAND



15383040 BEACH  
PEARL GREY – GRAPHITE



15380534 BEACH  
LIGHT SAND – YELLOW



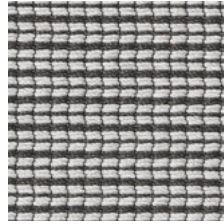
15520402 GRAIN  
NAVY BLUE – MELANGE GREY



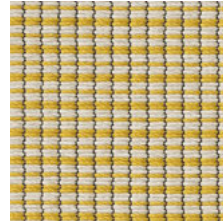
15520205 GRAIN  
MELANGE GREY – LIGHT SAND



15520405 GRAIN  
NAVY BLUE – LIGHT SAND



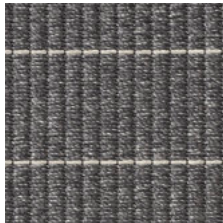
15524030 GRAIN  
GRAPHITE – PEARL GREY



15523405 GRAIN  
YELLOW – LIGHT SAND



15240405 LINE  
NAVY BLUE – LIGHT SAND



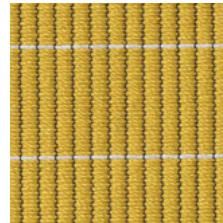
15240205 LINE  
MELANGE GREY – LIGHT SAND



15240504 LINE  
LIGHT SAND – NAVY BLUE



15243040 LINE  
PEARL GREY – GRAPHITE



15243405 LINE  
YELLOW – LIGHT SAND



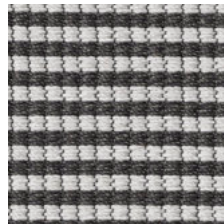
15510402 RIVER  
NAVY BLUE – MELANGE GREY



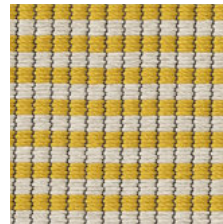
15510205 RIVER  
MELANGE GREY – LIGHT SAND



15510405 RIVER  
NAVY BLUE – LIGHT SAND



15514030 RIVER  
GRAPHITE – PEARL GREY



15513405 RIVER  
YELLOW – LIGHT SAND



15420402 BIG STRIPE  
NAVY BLUE – MELANGE GREY



15420205 BIG STRIPE  
MELANGE GREY – LIGHT SAND



15420405 BIG STRIPE  
NAVY BLUE – LIGHT SAND

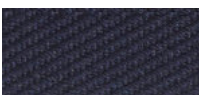


15424030 BIG STRIPE  
GRAPHITE – PEARL GREY

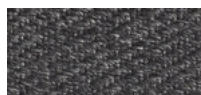


15423405 BIG STRIPE  
YELLOW – LIGHT SAND

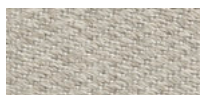
## EDGING



159350U04 NAVY BLUE



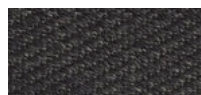
159350U02 MELANGE GREY



159350U05 LIGHT SAND



159350U30 PEARL GREY



159350U40 GRAPHITE



159350U32 YELLOW

## TUFTED WOOL LINEN CARPETS

### SAMMAL



Design: Sammal  
Material: 68 % pure new wool, 32 % linen  
Material (backing): polyester and cotton  
Production method: tufted  
Pile height: 25 mm  
Pile weight: 2,50 kg/m<sup>2</sup>  
Suggested application: residential and light contract

Carpets are supplied to order. The maximum width is 350 cm and maximum length 1000 cm. Production tolerance  $\pm 2$  cm. Round carpets are possible. For other shapes, please ask. Design Ritva Puotila.

### AAPA



Design: Aapa  
Material: 60 % wool (hard twist), 40 % linen  
Material (backing): polyester and cotton  
Production method: tufted  
Pile height: 25/35 mm (stripes)  
Pile weight: 2,70 kg/m<sup>2</sup>  
Suggested application: residential and light contract

Carpets are supplied to order. The maximum width is 350 cm and maximum length 1000 cm. Production tolerance  $\pm 2$  cm. Round carpets are possible. For other shapes, please ask. Design Ritva Puotila.

### PATH



Design: Path  
Material: 55 % pure wool, 45 % linen  
Material (backing): polyester and cotton  
Production method: tufted  
Pile height: 14 mm (pile), 10 mm (loop)  
Pile weight: 2,70 kg/m<sup>2</sup>  
Suggested application: residential and light contract

Carpets are supplied to order. The maximum width is 350 cm and maximum length 1000 cm. Production tolerance  $\pm 2$  cm. Round carpets are possible. For other shapes, please ask. Design Ritva Puotila.

### WILD



Design: Wild  
Material: 70 % linen, 30 % pure wool  
Material (backing): polyester and cotton  
Production method: tufted  
Pile height: 35 mm  
Pile weight: 3,50 kg/m<sup>2</sup>  
Suggested application: residential and light contract

Carpets are supplied to order. The maximum width is 350 cm and maximum length 1000 cm. Production tolerance  $\pm 2$  cm. Round carpets are possible. For other shapes, please ask. Design Ritva Puotila.

### TUNDRA



Design: Tundra  
Material: 70 % linen, 30 % pure wool  
Material (backing): polyester and cotton  
Production method: tufted  
Loop height: 12 mm  
Pile weight: 2,50 kg/m<sup>2</sup>  
Suggested application: residential and light contract

Carpets are supplied to order. The maximum width is 350 cm and maximum length 1000 cm. Production tolerance  $\pm 2$  cm. Round carpets are possible. For other shapes, please ask. Design Ritva Puotila.



1610101 SAMMAL  
WHITE



1612222 SAMMAL  
ICE



1610505 SAMMAL  
SAND



1613001 SAMMAL  
LIGHT GREY



1620101 AAPA  
WHITE



1621515 AAPA  
STONE



1620505 AAPA  
SAND



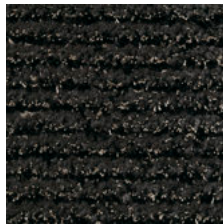
1620202 AAPA  
WARM GREY



1630101 PATH  
WHITE



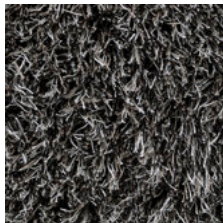
1631501 PATH  
LIGHT GREY



1630202 PATH  
GREY



1640115 WILD  
LIGHT GREY



1640202 WILD  
GREY



1651501 TUNDRA  
STONE - WHITE



1650109 TUNDRA  
WHITE - BLACK



1650901 TUNDRA  
BLACK - WHITE



1650201 TUNDRA  
GREY - WHITE



1650905 TUNDRA  
BLACK - NATURAL

## TUFTED WOOL LINEN CARPETS

### MAJORE



Design: Majore  
Material: 80 % pure wool, 20 % linen  
Material (backing): polyester  
Production method: tufted  
Pile height: 25/15 mm (loop pile)  
Pile weight: 2,30 kg/m<sup>2</sup>  
Suggested application: residential and contract

Carpets are supplied to order. The maximum width is 400 cm and the maximum length 900 cm. Production tolerance  $\pm 2$  cm. Round carpets are also available in this quality. Water-repellent treated which helps carpet maintenance. Non-toxic treatment, harmless to health and the environment. Design Hanna Korvela.

## HAND KNOTTED WOOL RUGS

### UNI



Design: Uni  
Production method: hand knotted  
Material: 90% pure wool (pile and weft), 10% cotton (warp)  
Thickness: 20 mm (pile height 15 mm)  
Weight: 3,7 kg/m<sup>2</sup>  
Sizes: 140x200, 170x240, 200x300, 250x350 cm

Special sizes available on request. The maximum width is 350 cm and the maximum length 1000 cm. Production tolerance  $\pm 5-10$  cm. The colour palette is soft earthy, colours are natural sheep wool colours (except black) that have not been chemically dyed. Design Woodnotes design team.

### GRID



Design: Grid  
Production method: hand knotted  
Material: 90% pure wool (pile and weft), 10% cotton (warp)  
Thickness: 20 mm (pile height 15 mm)  
Weight: 3,7 kg/m<sup>2</sup>  
Sizes: 140x200, 170x240, 200x300, 250x350 cm

Special sizes available on request. The maximum width is 350 cm and the maximum length 1000 cm. Production tolerance  $\pm 5-10$  cm. The colour palette is soft earthy, colours are natural sheep wool colours (except black) that have not been chemically dyed. Design Woodnotes design team.

Each corner is decorated with a braided wool fringe, which is reminiscent of craftsmanship. The braids can be removed if desired.



17270101101 MAJORE  
QUARTZ



17270215226 MAJORE  
OPAL



17270202215 MAJORE  
LIGHT BROWN



17270202217 MAJORE  
BROWN



17270104204 MAJORE  
OBSIDIAN



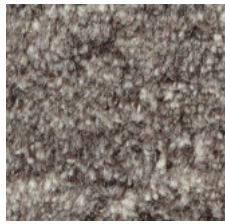
17270104207 MAJORE  
BLACK



18500115 UNI  
IVORY WHITE



18503030 UNI  
LIGHT GREY



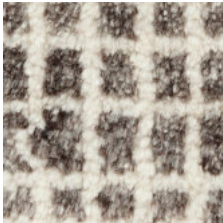
18500202 UNI  
GREY



18500505 UNI  
CAMEL



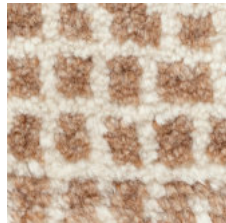
18600130 GRID  
WHITE - LIGHT GREY



18600102 GRID  
WHITE - GREY



18600109 GRID  
WHITE - BLACK



18600105 GRID  
WHITE - CAMEL

## BLINDS AND PANELS

### ROLLER BLIND WITH CHAIN (D)



Mechanism: D, chain operated roller blind (Silent Gliss)  
Fabrics: Morning, Open Sky, Vista and Cloud (see page 25)  
Suggested application: residential and contract

Silent and precise roller blind.  
Metal bead chain with right or left operation. Mechanism available in white or black. Parallel blinds can be installed side by side with centre support bracket and minimal light gap. Continuous headrail helps installation. Also motorized roller blinds supplied to order.  
Sizes: Blinds are produced according to customer specifications and supplied ready-made with installation kit. Max. width 200 cm. Production tolerance  $\pm 0,5\%$ .

### FOLDING BLIND WITH CHAIN (E)



Mechanism: E, chain operated folding blind (Silent Gliss)  
Fabrics: Morning, Open Sky, Vista and Cloud (see page 25)  
Suggested application: residential and contract

Easy operating and precise folding blind.  
Wind-up technique hidden in a cassette. Metal bead chain with right or left operation. Also motorized folding blinds supplied to order.  
Sizes: Blinds are produced according to customer specifications and supplied ready-made with installation kit. Maximum width 200 cm. Production tolerance  $\pm 0,5\%$ .

### FOLDING BLIND (C)



Mechanism: C, string operated folding blind  
Fabrics: Morning, Open Sky, Vista and Cloud (see page 25)  
Suggested application: residential

Smoothly translucent string operated folding blind.  
Mechanism with right or left operation. Blind is supplied with a metal wall knob for fixing the strings.  
Sizes: Blinds are produced according to customer specifications and supplied ready-made with installation kit. Maximum width 200 cm. Production tolerance  $\pm 0,5\%$ .

### CLASSIC ROLLER BLIND (B)



Mechanism: B, string operated roller blind  
Fabrics: Morning, Open Sky, Vista and Cloud (see page 25)  
Suggested application: residential

Smoothly translucent string operated roller blind.  
Mechanism with right or left operation. Blind is supplied with a metal wall knob for fixing the strings.  
Sizes: Blinds are produced according to customer specifications and supplied ready-made with installation kit. Maximum width 200 cm. Production tolerance  $\pm 0,5\%$ .

### PANEL (G)



Mechanism: G, panel for panel glide system (Silent Gliss)  
Fabrics: Morning, Open Sky, Vista and Cloud (see page 25)  
Suggested application: residential and contract

Fabrics with varying degrees of translucency available for panels.  
Panels are suited especially well for high spaces.  
Velcro band at top and flat metal weight at bottom.  
Mechanism supplied to order (also motorized).  
Sizes: Panels are produced according to customer specifications and supplied as ready-made elements. Max. width 150 cm. Production tolerance  $\pm 0,5\%$ .



## BLIND AND PANEL FABRICS

### MORNING, OPEN SKY, VISTA AND CLOUD

Blind fabrics allow a delicate and soft light to pass through.  
Design Ritva Puotila.

Material compositions:

Morning: 80 % paper yarn, 20 % cotton  
Open Sky: 83 % paper yarn, 17 % cotton  
Vista: 81 % paper yarn, 19 % cotton  
Cloud: 82 % paper yarn, 18 % cotton

Weight:

Morning: 610 g/m<sup>2</sup>  
Open Sky: 450 g/m<sup>2</sup>  
Vista: 410 g/m<sup>2</sup>  
Cloud: 485 g/m<sup>2</sup>  
Fabric width: 200 cm







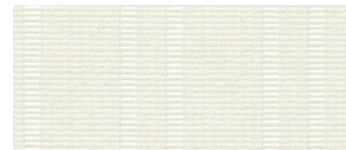
21311 VISTA WHITE



21211 OPEN SKY WHITE



21111 MORNING WHITE



2140101 CLOUD WHITE



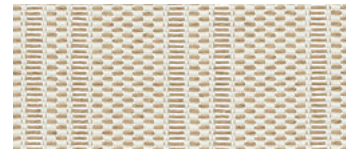
21315 VISTA WHITE - NATURAL



21215 OPEN SKY WHITE - NATURAL



21115 MORNING WHITE - NATURAL



2140105 CLOUD WHITE - NATURAL



213115 VISTA WHITE - STONE



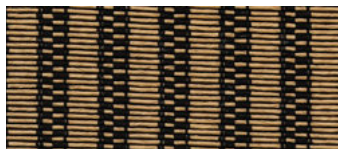
212115 OPEN SKY WHITE - STONE



211115 MORNING WHITE - STONE



2140115 CLOUD WHITE - STONE



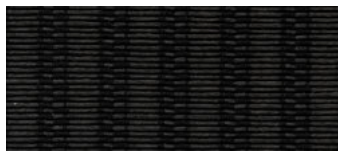
21395 VISTA BLACK - NATURAL



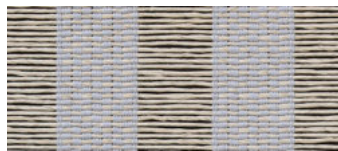
21221 OPEN SKY SILVER - WHITE



21121 MORNING SILVER - WHITE



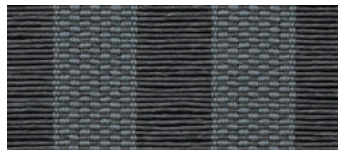
21399 VISTA BLACK



21225 OPEN SKY SILVER - STONE



211215 MORNING SILVER - STONE



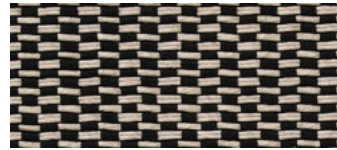
2124040 OPEN SKY GRAPHITE



21195 MORNING BLACK - NATURAL



2124009 OPEN SKY GRAPHITE - BLACK



211915 MORNING BLACK - STONE



21199 MORNING BLACK



2114040 MORNING GRAPHITE



2114015 MORNING GRAPHITE - STONE

## FURNITURE

### SWIVEL K CHAIR



The swivel k chair has a matt chromed or matt-black base plate equipped with rotating and rocking mechanism. Tubular frame on seat. Removable upholstery in fabric or leather. The frame consists of four removable parts. Design Harri Koskinen.

Fabrics: Sand, Das and leather  
On request Steelcut Trio 3 and Hallingdal

46005	WIDE SWIVEL k CHAIR	89x86x97/41 cm
46006	extra cover for large swivel k chair	
46015	WIDE k OTTOMAN with plate	89x53x43 cm

### NARROW SWIVEL K CHAIR



The narrow swivel k chair has a matt chromed or matt-black base plate equipped with rotating and rocking mechanism. Tubular frame on seat. Removable upholstery in fabric or leather. The frame consists of four removable parts. Design Harri Koskinen.

Fabrics: Sand, Das and leather  
On request Steelcut Trio 3 and Hallingdal

46007	NARROW SWIVEL k CHAIR	72x86x97/41 cm
46008	extra cover for narrow swivel k chair	
46017	NARROW k OTTOMAN with plate	72x53x43 cm

### SWIVEL K CHAIR WITH ARMRESTS



A luxurious lounge chair with armrests. Combine it with k ottoman for extra comfort. The chair has a matt chromed or matt-black base plate equipped with rotating and rocking mechanism. Tubular frame on seat, plywood frame on armrests. Removable upholstery. Design Harri Koskinen.

Fabrics: Sand, Das and leather  
On request Steelcut Trio 3 and Hallingdal

46009	SWIVEL k CHAIR WITH ARMRESTS	88x86x97/41 cm
-------	------------------------------	----------------

### K CHAIR



The k chair has a metal matt chromed or matt-black tubular frame and a removable upholstery. The frame consists of three removable parts, which makes it possible to ship the item in an economical package. Design Harri Koskinen.

Fabrics: Sand and Das  
On request Steelcut Trio 3 and Hallingdal

46001	WIDE k CHAIR	89x86x97/41 cm
46002	extra cover for large k chair	
46011	WIDE k OTTOMAN tubular	89x53x43 cm

### NARROW K CHAIR



The narrow k chair has a metal matt chromed or matt-black tubular frame and a removable upholstery. The frame consists of three removable parts, which makes it possible to ship the item in an economical package. Design Harri Koskinen.

Fabrics: Sand and Das  
On request Steelcut Trio 3 and Hallingdal

46003	NARROW k CHAIR	72x86x97/41 cm
46004	extra cover for narrow k chair	
46013	NARROW k OTTOMAN tubular	72x53x43 cm

## SWIVEL K CHAIR WITH STAR BASE



The versatile swivel k chair with lighter matt chromed or matt-black star base. The star based k chair is a natural continuum to its two predecessors, combining their lightness, rotation and the pleasant rocking mechanism. The k ottoman turns the k chair into a comfortable lounge chair. Design Harri Koskinen.

Fabrics: Sand, Das and leather  
On request Steelcut Trio 3 and Hallingdal

46025	WIDE SWIVEL k CHAIR	89x86x97/41 cm
46006	extra cover for large swivel k chair	
46035	WIDE k OTTOMAN with plate	89x53x43 cm

## NARROW SWIVEL K CHAIR WITH STAR BASE



The versatile swivel k chair with lighter matt chromed or matt-black star base. The star based k chair is a natural continuum to its two predecessors, combining their lightness, rotation and the pleasant rocking mechanism. The k ottoman turns the k chair into a comfortable lounge chair. Design Harri Koskinen.

Fabrics: Sand, Das and leather  
On request Steelcut Trio 3 and Hallingdal

46027	NARROW SWIVEL k CHAIR	72x86x97/41 cm
46008	extra cover for narrow swivel k chair	
46037	NARROW k OTTOMAN with plate	72x53x43 cm

## SWIVEL K CHAIR WITH ARMRESTS AND STAR BASE



The versatile swivel k Chair with comfortable armrests and lighter star base. The tubular frame is matt chromed or matt-black. Design Harri Koskinen.

Fabrics: Sand, Das and leather  
On request Steelcut Trio 3 and Hallingdal

46029	SWIVEL k CHAIR WITH ARMRESTS	88x86x97/41 cm
-------	------------------------------	----------------

## FURNITURE

### SIRO



A multipurpose chair that can be used as a dining chair, but it can be also used as a night table, bench or side chair. It is made of oak and lacquered or stained black. There is a choice of wooden or leather upholstered seat. Design Ilkka Suppanen and Raffaella Mangiarotti.

4400	SIRO	44,5x52,5x78,5/45 cm
4410	SIRO, upholstered	44,5x52,5x78,5/46,5 cm
4409	SIRO, black	44,5x52,5x78,5/45 cm
4419	SIRO, black, upholstered	44,5x52,5x78,5/46,5 cm

### SIRO WITH ARMRESTS



The Siro chair with armrests is a dining chair made of oak and lacquered or stained black. The armrest is a bent metal covered with leather curved around the chair creating a beautiful and slender look. There is a choice of wooden or leather upholstered seat. Design Ilkka Suppanen and Raffaella Mangiarotti.

4450	SIRO with armrests	59x52,5x78,5/45 cm
4460	SIRO with armrests, upholstered	59x52,5x78,5/46,5 cm
4459	SIRO with armrests, black	59x52,5x78,5/45 cm
4469	SIRO with armrests, black, upholstered	59x52,5x78,5/46,5 cm

### SIRO BAR STOOL



The Siro bar stool is beautifully proportioned high stool with a backrest lowered as if it was a handle. It's made of oak and waxed or stained black. The footrest is brass or black painted metal. There's a choice of wooden or black leather upholstered seat. Design Ilkka Suppanen and Raffaella Mangiarotti.

4470	SIRO BAR STOOL 65	38,5x43x82,5/65 cm
4470U	SIRO BAR STOOL 65, upholstered	38,5x43x82,5/66,5 cm
4479	SIRO BAR STOOL 65, black	38,5x43x82,5/65 cm
4479U	SIRO BAR STOOL 65, black, upholstered	38,5x43x82,5/66,5 cm

### TWIGGY



Twiggy is a small visually and physically light side table. The structure is a beautiful play of sticks which can be seen under the glass top. This table is multifunctional and easy to move around. The oak frame is polished with wax and the ash frame is stained white or black.

Design Ilkka Suppanen and Raffaella Mangiarotti.

Oak	Black	White		
45700W	46700WB	46700WW	S	44x44x45,5 cm
46702W	46702WB	46702WW	M	66,5x66,5x38,5 cm
46703W	46703WB	46703WW	L	44x88x45,5 cm
46704W	46704WB	46704WW	XL	88x88x38,5 cm



The pattern variations on the oak surface are unique. They are not defects but individual features, resulting from the growth of the wood. The patterns tell a tale of the tree's life – eg, the flamelike zebra stripes are actually medullary rays, that transfer water and nutrients to the inner parts of the trunk.

## FURNITURE

### BED



Woodnotes bed includes wooden frame and base, also available without the base. Bed sides are upholstered. Also available with four sides (can be used without the headboard).

Fabrics: Sand

On request Steelcut Trio 3

47010	BED with base	90x200	160x200	180x200	cm
47011	BED with base			180x210	
47005	BED frame only		160x200	180x200	180x210

Other sizes are supplied to order. Bed frame height 30 or 40 cm. Headboard to be ordered separately.

### BED HEADBOARD



Woodnotes bed headboard is upholstered with Sand paper yarn cotton fabric. The dustless and anti-static upholstery is ideal for use in bedroom. It can also be used together with benches. The headboard has a wooden frame. It is also available in two elements.

Fabrics: Sand

On request Steelcut Trio 3

47001A	BED HEADBOARD	95x105–360	cm
47001C	BED HEADBOARD	110x105–360	
47001B	BED HEADBOARD	125x105–360	

Other sizes are supplied to order.

### QUILTED BED HEADBOARD



Woodnotes lightly padded headboard is simple, but not boring. Its beautiful checkered structure and slender appearance is soft, relaxed and natural. There's no hard frame, the quilted bed headboard is hung on the wall. The inner padding is polyester. Design Ulla Koskinen.

Fabrics: Sand and Das

4705	QUILTED HEADBOARD	max height	90	cm
		max width	282	cm

Standard height: 90 cm

Standard widths: 90, 109, 126, 143, 160, 177, 195, 212, 230, 247, 265, 282 cm

Other sizes are supplied to order. The square is 17,5 x 17,5 cm.

## MY AND MINI MY



Soft but sturdy, the lounge chairs are designed for casual, relaxed seating. The cover is removable and changeable. The filling of these practical chairs is a mixture of materials that is guaranteed to stay in shape. Mini My completes the lounge chair family. Saimaa fabric and the specific moist proof inner material is intended especially for outdoor use e.g. terrace, balcony and pool area. Design Ulla Koskinen.

Fabrics: Sand, Saimaa and Das  
On request Steelcut Trio 3

4611	MY	95x140x85 cm
4610	MINI MY	75x110x70 cm

## ROO



Roo is long and divan-like, inviting you for a moment of rest. Saimaa fabric and the specific moist proof inner material is intended especially for outdoor use e.g. terrace, balcony and pool area. Design Ulla Koskinen.

Fabrics: Sand, Saimaa and Das  
On request Steelcut Trio 3

4612	ROO	95x180x85 cm
------	-----	--------------

## REST MY



My lounge chair upholstered with Rest fabric. Rest allows the use of leftover materials from the Sand upholstery fabric. Stripe pattern design Mari Isopahkala and Tanja Sipilä.

461179151	REST MY Black – Stone – White	95x140x85 cm
-----------	-------------------------------	--------------

## BENCH



Woodnotes benches are upholstered and they have a wooden frame with 5 cm high wooden (birch or stained black) or metal feet. Benches in sizes 40x40, 50x50 and 60x60 cm are supplied with button feet (height 1,5 cm). Design Ulla Koskinen.

Fabrics: Sand and Das  
On request Steelcut Trio 3 and Hallingdal

45601	BENCH	40/50/60x40–160x43 cm
45605	ROUND BENCH	Ø 60x43 Ø 90x43 Ø 120x43 cm

Other sizes and heights are supplied to order.

## ACCESSORIES

### WHISPER



Whisper is an environmentally friendly acoustic panel made from pure and safe raw materials. Wooden frame, inside material fire resistant recycled polyester insulation. Cover is upholstered with Sand paper yarn cotton fabric. Excellent audio-technological features. Suspension with wall rails. Suggested applications: residential and contract. Design Tapio Anttila.

4801	A0606	60x 60x 4 cm	A0808	80x80x 4
	B0606	60x 60x10	B0808	80x80x10
	A0612	60x120x 4		
	B0612	60x120x10		

Available also in reversed measures. Other sizes are supplied to order.

### CUSHIONS



Cool cushion has an inner pillow filled with a high density plastic foam and is well suited to use as seat, ottoman or side table. All cushion cases are closed with a velcro band. Design Ritva Puotila and Minna Ahokas.

Fabrics: Sand and Das

434	COOL CUSHION	50x50x32 cm
435	COOL CUSHION	60x60x32 cm
436	ROUND COOL CUSHION	Ø 60x32 cm

### REST CUSHION



The design of the Rest fabric began from the use of leftover materials from the Sand upholstery fabric. The pattern of the Rest cushions is slightly different on each side. Beautiful and earthy tones match with various decorations. Rest cushions have a lining and due to the sturdiness of the fabric they can be used as floor cushions. Inner pillow with 100% ecological cotton case filled with GRS certified recycled 100% PET-bottle polyester wadding.

Design Mari Isopahkala and Tanja Sipilä.

4331711	WHITE	50x50 cm
43317151	STONE – WHITE	50x50 cm
433173434	BRASS	50x50 cm
433174040	GRAPHITE	50x50 cm





25355 WOODPECKER NATURAL



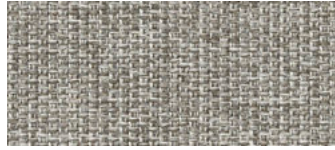
255359 WOODPECKER NATURAL - BLACK



02 DAS LIGHT BEIGE



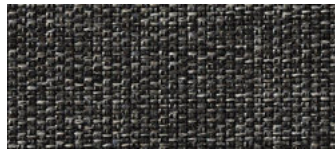
50 DAS STONE



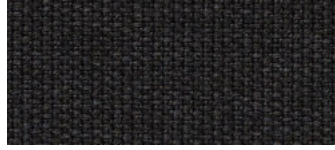
07 DAS LIGHT GREY



51 DAS GREY



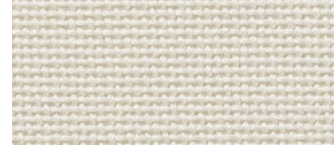
52 DAS DARK GREY



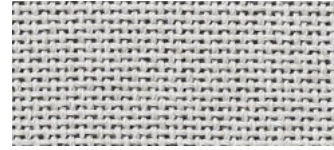
55 DAS BLACK



2580101 SAIMAA NATURAL WHITE



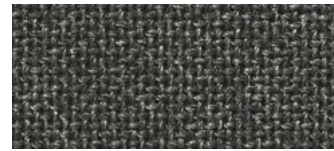
2580501 SAIMAA LIGHT SAND



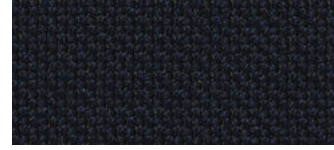
2583040 SAIMAA PEARL GREY



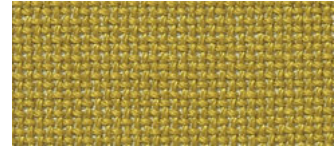
2584040 SAIMAA GRAPHITE



2580240 SAIMAA MELANGE GREY



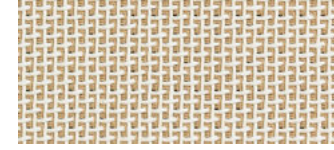
2580440 SAIMAA NAVY BLUE



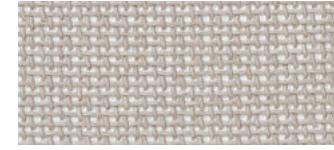
2583401 SAIMAA YELLOW



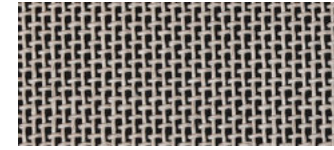
25611 SAND WHITE



25615 SAND WHITE - NATURAL



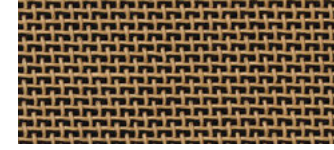
256151 SAND STONE - WHITE



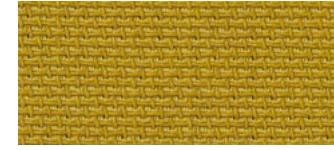
256159 SAND STONE - BLACK



25655 SAND NATURAL



25659 SAND NATURAL - BLACK



2563434 SAND BRASS



256928 SAND BLACK - BLACK ROSE



25699 SAND BLACK

## UPHOLSTERY FABRICS

### SAND

Material: 70 % paper yarn, 30 % cotton  
Weight: 660 g/m<sup>2</sup>  
Fabric width: 160 cm  
Martindale: 50.000

Sand paper yarn cotton upholstery fabric is designed for furniture in the home and in public spaces. It is supplied with soil-repellent treatment. Design Ritva Puotila. According to the smouldering cigarette and match flame tests, Sand upholstery fabric can be used in upholstered furniture of public premises such as hotels, restaurants, theatres and in board ship industry.

### WOODPECKER

Material: 100 % paper yarn  
Weight: 843 g/m<sup>2</sup>  
Fabric width: 147 cm  
Martindale: 50.000

Woodpecker paper yarn upholstery fabric is designed for furniture in the home and in public spaces. Design Ritva Puotila.

### DAS

Material: 50 % PP, 31 % PES, 19 % CO  
Weight: 658 g/m<sup>2</sup>  
Fabric width: 140 cm  
Martindale: 36.000

Natural look and resistant to wear. The fabric's high light-fastness prevents the colours from fading. Easy to clean.

### SAIMAA OUTDOOR/INDOOR

Material: 100 % polypropene  
Weight: 550 g/m<sup>2</sup>  
Fabric width: 160 cm  
Martindale: 30.000

Resistant to chlorine, salt, mildew and bacteria. Warms like wool and is thermoregulating and transpiring. Design Ritva Puotila.

## ACCESSORIES

### PLACE MATS



The collection features place mats made of paper yarn, woven onto a cotton warp. The material has been soil-repellent treated. There are four designs available: Morning, Open Sky, Vista and Cloud. Design Ritva Puotila.

Size: 35x45 cm (4 pcs/package)

### TABLE RUNNERS



The collection features table runners made of paper yarn, woven onto a cotton warp. The material has been soil-repellent treated. There are four designs available: Morning, Open Sky, Vista and Cloud. Design Ritva Puotila.

Sizes: 35x120, 35x180 cm

Other lengths are supplied to order: 45 cm wide table runners are available on request (only in blind fabric colours).



31311 VISTA WHITE



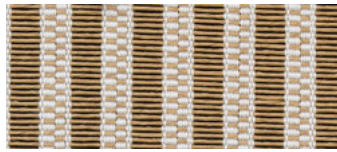
31211 OPEN SKY WHITE



31111 MORNING WHITE



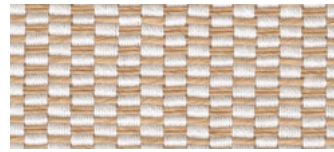
3140101 CLOUD WHITE



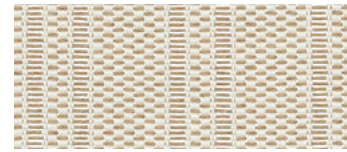
31315 VISTA WHITE - NATURAL



31215 OPEN SKY WHITE - NATURAL



31115 MORNING WHITE - NATURAL



3140105 CLOUD WHITE - NATURAL



313115 VISTA WHITE - STONE



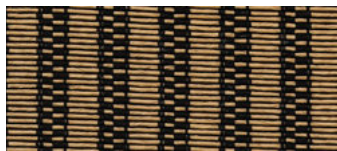
312115 OPEN SKY WHITE - STONE



311115 MORNING WHITE - STONE



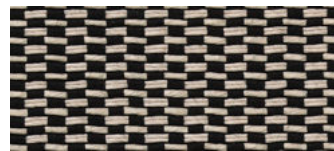
3140115 CLOUD WHITE - STONE



31395 VISTA BLACK - NATURAL



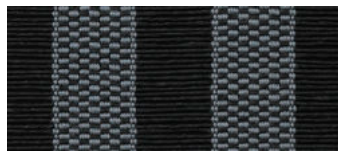
3124040 OPEN SKY GRAPHITE



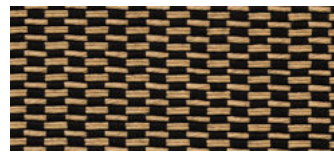
311915 MORNING BLACK - STONE



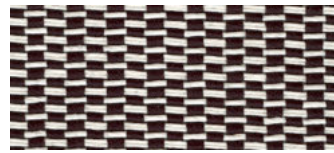
31399 VISTA BLACK



3124009 OPEN SKY GRAPHITE - BLACK



31195 MORNING BLACK - NATURAL



31191 MORNING BLACK - WHITE



31199 MORNING BLACK



3114040 MORNING GRAPHITE



3114015 MORNING GRAPHITE - STONE

## TABLE TEXTILE FABRICS

### MORNING, OPEN SKY, VISTA AND CLOUD

Material:

Morning	80 % paper yarn, 20 % cotton
Open Sky	83 % paper yarn, 17 % cotton
Vista	81 % paper yarn, 19 % cotton
Cloud	82 % paper yarn, 18 % cotton

Fabrics have been treated with soil-repellent.  
Design Ritva Puotila.

## ACCESSORIES

### BOX ZONE CONTAINERS



Box Zone containers offer many ways to store goods both in the home and at office. Box Zone is available in six sizes. Design Minna Ahokas.

#### BOX ZONE

360	15x15x15	361	20x20x20	362	30x30x30 cm
363	40x40x40	361A	20x20x15	362B	30x30x20

### BEACH BAG



Spacious Beach bag is an easy bag for the holiday season. Now with longer handles. Design Minna Ahokas.

4175	BEACH BAG S	40x34x12,5 cm
4174	BEACH BAG M	52x37x20 cm
4173	BEACH BAG L	65x48x20 cm

### BRIEFCASE



Briefcase is an ideal light case for papers, catalogues etc. Design Minna Ahokas.

4181	BRIEFCASE	37x26x2 cm
------	-----------	------------

### MAGAZINE RACK



The Woodnotes Magazine Rack keeps newspapers and magazines in good order. The frame is oak and available also in black. The bag is made of from woven paper yarn fabric, Plain, and available in several colours. The frame consists of six removable parts.

Design Ilkka Suppanen and Rafaella Mangiarotti.

3690	MAGAZINE RACK	50x32x45 cm
------	---------------	-------------

## ACCESSORY FABRICS

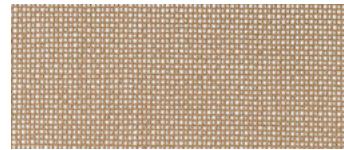
### PLAIN

Material: 100 % paper yarn  
Width: 147 cm  
Weight: 415g/m<sup>2</sup>

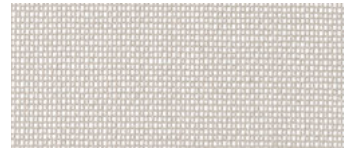
The original fabric of the Woodnotes collection since 1987. Design Ritva Puotila.



11 PLAIN WHITE



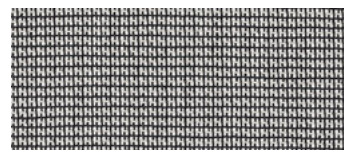
55 PLAIN NATURAL



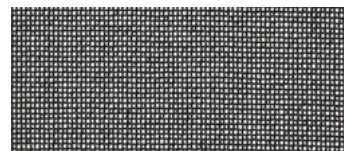
1515 PLAIN STONE



159 PLAIN STONE - BLACK



91 PLAIN BLACK - WHITE



99 PLAIN BLACK

## STUDIO COLLECTION

### SEABORN



Seaborn throw is well suited to be used for example on the bed.  
Design Ritva Puotila.

Quality: hand-knitted 100 % paper yarn  
Sizes: 110x200, 140x200 cm  
Other sizes available on request. Tolerance during use +10%.

### VEIL



Veil curtain can be used as a cloud-like curtain or a room divider.  
Design Ritva Puotila.

Quality: hand-knitted 100 % paper yarn  
Sizes: 130x240, 130x290 cm  
Other sizes available on request. Tolerance during use +10%.

### MESH



Mesh partition gets an interesting glow effect from metal wires. It also works as a throw.

Design Ritva Puotila.

Quality: hand-knitted paper yarn and copper or steel  
Sizes: 130x240, 130x290 cm  
Other sizes available on request. Tolerance during use +10%.



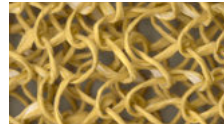
47201 SEABORN CLOUD



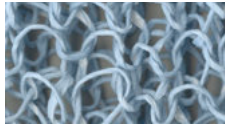
47215 SEABORN STONE



47205 SEABORN NATURE



47203 SEABORN DRY STRAW



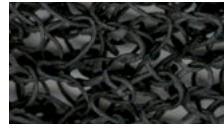
47204 SEABORN SKY



47210 SEABORN DARK BLUE



47240 SEABORN GRAPHITE



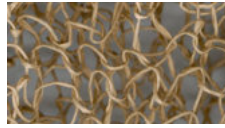
47209 SEABORN BLACK



7210101 VEIL WHITE



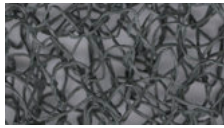
7211515 VEIL STONE



7210505 VEIL NATURAL



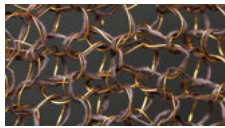
7210404 VEIL DARK BLUE



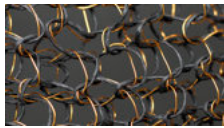
7214040 VEIL GRAPHITE



7210909 VEIL BLACK



7111605 MESH  
WENGE – COPPER



7110905 MESH BLACK – COP-  
PER



7110902 MESH BLACK – STEEL

**WOODNOTES OY**

TALLBERGINKATU 1B  
00180 HELSINKI, FINLAND  
TEL +358 9 694 2200

[woodnotes@woodnotes.fi](mailto:woodnotes@woodnotes.fi)  
[www.woodnotes.fi](http://www.woodnotes.fi)  
[@woodnotesdesign](#)